

528

3

4

5

8

7

6

14

15

18

17

16

23

24

25

WILBETH ACRES

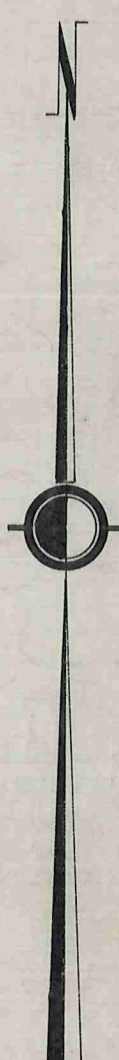
1	A. R. OTCASEK	2.99-3.23	2.89 A
2	A. A. Trask	3.31-4.02	2.72 A
3	J. C. Tomasiak	3.19-2.39	2.89 A
4			
5			
6	B. S. Newman	3.40-3.52	2.89 A
7	R. S. Gerry	3.19-3.45	2.89 A
8			
9			
10			
11	A. D. Hammond	3.15-1.62	2.89 A
12	L. M. Rogers	3.16-5.18	2.89 A
13	J. R. Spangler	3.42-5.07	2.89 A
14	M. Woods	3.45-1.37	2.79 A

WILBETH ACRES SUB. DIV. PLATS VOL. 7 - Pg. 13

MADISON ROAD

HAYES ROAD

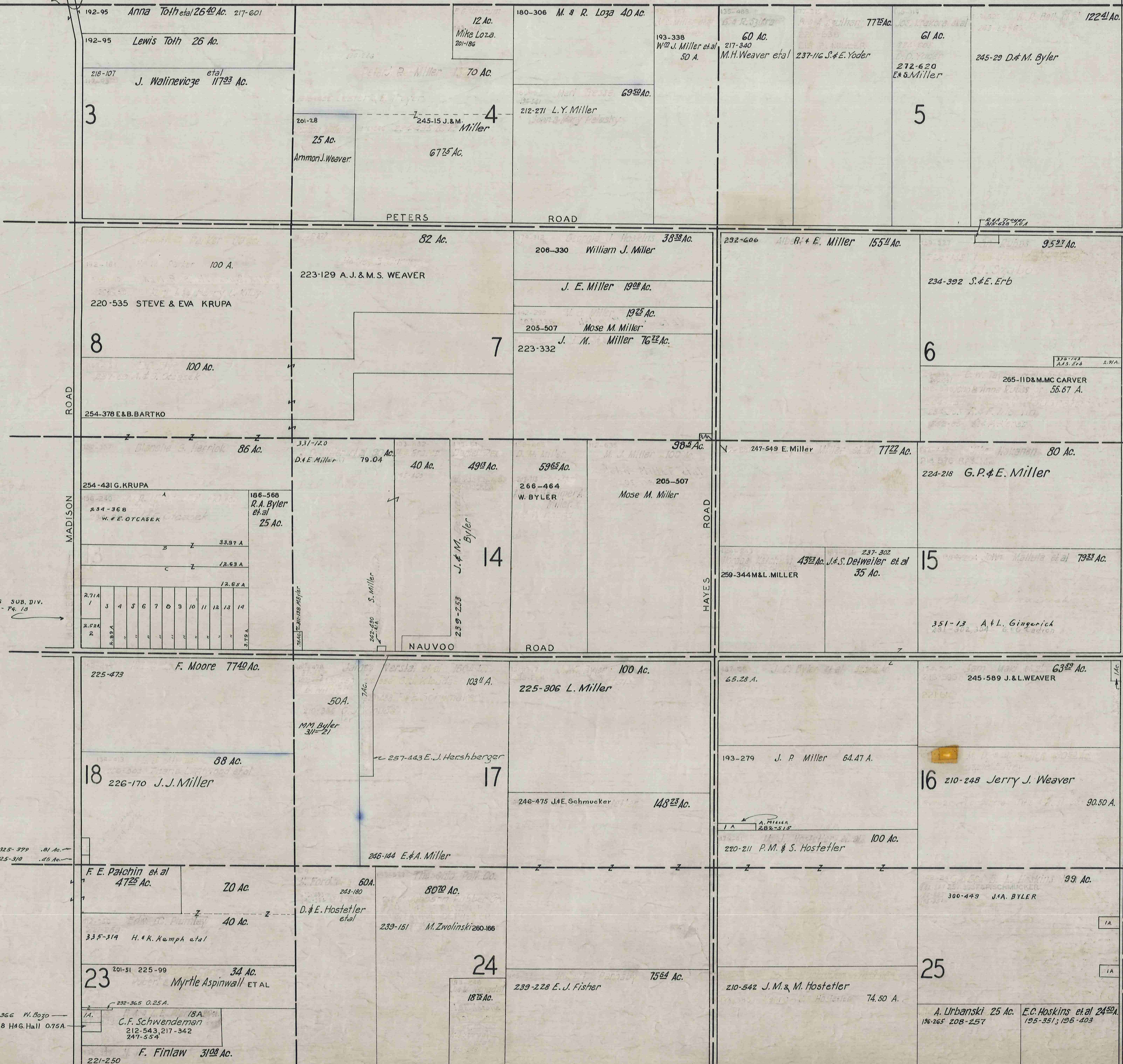
BUNDSBURG ROAD



SCALE 1IN.=10CH.

JAN. 1, 1959

9 N.E.



528

NORTH-WEST QUARTER

MIDDLEFIELD T.P.

NORTH-WEST QUARTER

CLARIDON TP.

P. P. ROAD

T. T. ROAD

N. N. ROAD

O. O. ROAD

R. R. ROAD

U. U. ROAD

B. B. ROAD

DURKEE ROAD

MADISON ROAD

Lot 10 L.F. DeWitt

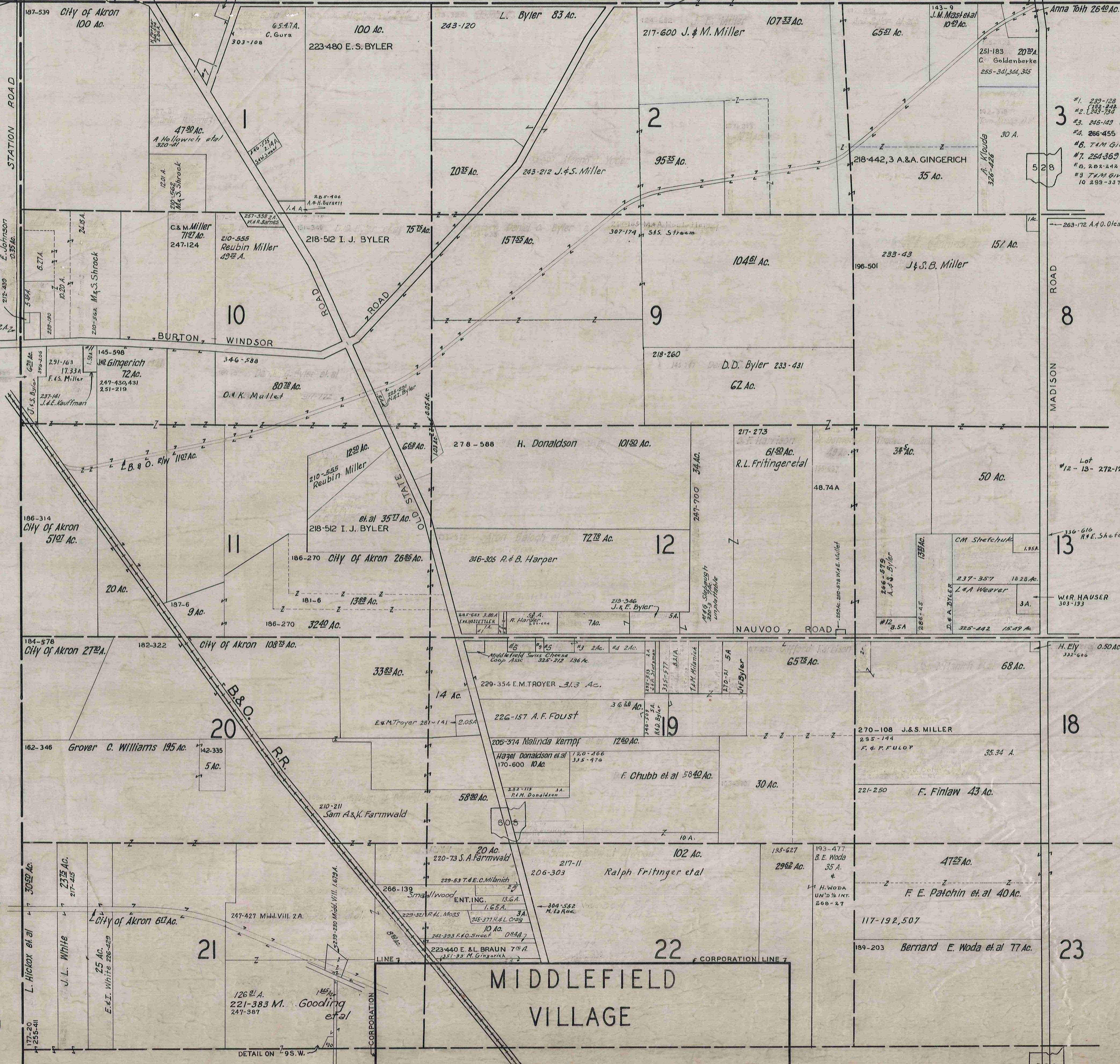
320-265

- #1. 229-128 B. Hosteller 0.13 A. Lot 12
- #2. 233-242 M. T. Givan 0.25 A. " 12
- #3. 245-149 V. Troyer #5. 257-356 2.21 A. " 19
- #4. 266-455 J.E. STUTZMAN " 19
- #6. T.M. Givan 311-297 2 A. " 19
- #7. 254-369 H. Merryfield 1.492 A. " 1
- #8. 202-242 M.T. GIVAN .13 A. " 12
- #9. T.M. Givan 311-297 .49 A. " 19
- #10. 299-337 H. & M. THOMAS .38 A. " 21

SCALE 1 IN. = 10 CH.

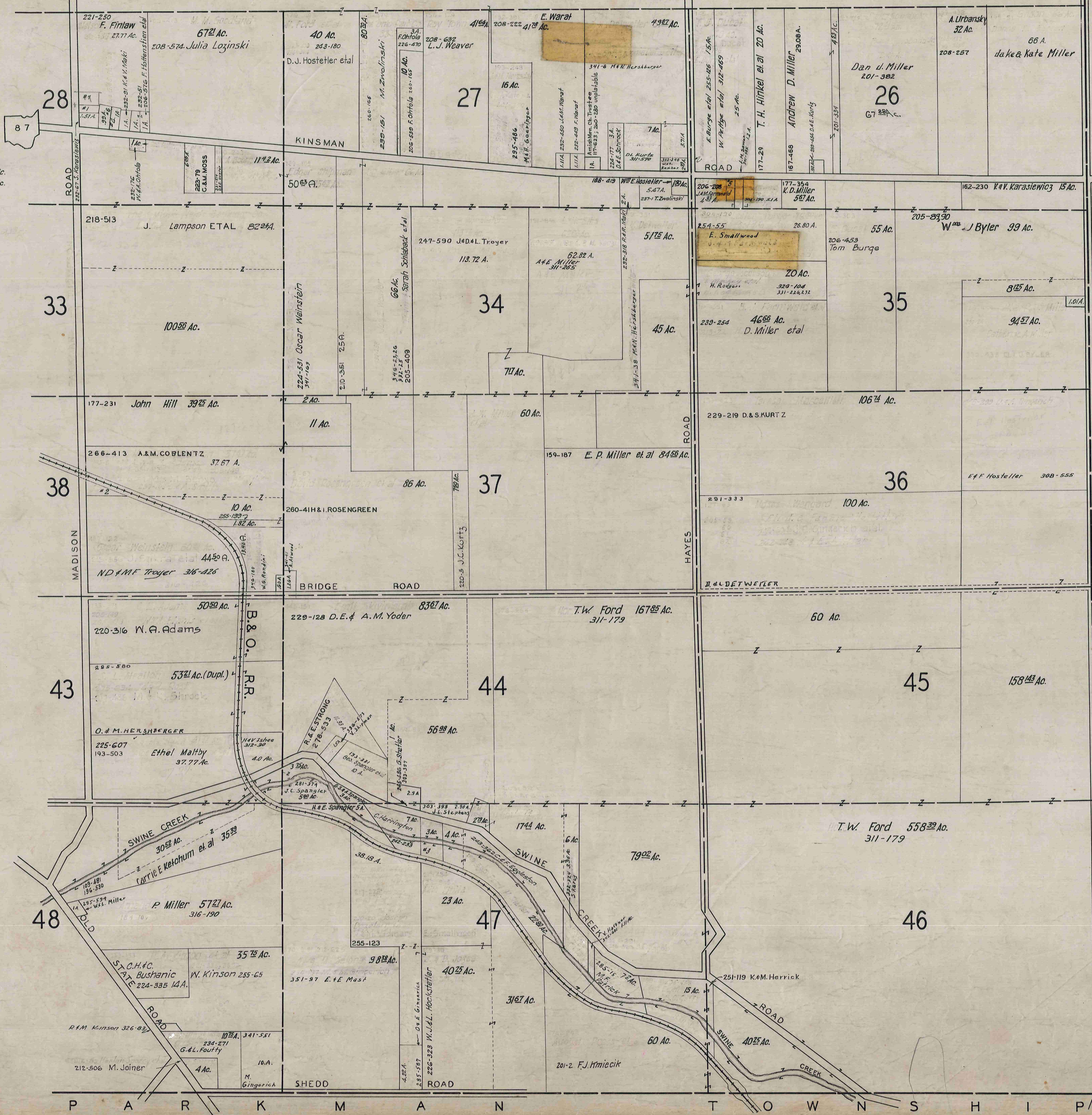
JAN. 1, 1953

9 N.W.



528

- Lot 28 #1, 342-122 S. Carey .73 Ac.
- " 38 #2, 255-113 L. & A. Smith 1.18 Ac.
- " 47 #3, 243-848 J. Blackford
- " 28 #6, 254-215 S. Karasiewicz
- " 26 #5, 286-47 D. Miller 1.12 A.
- " 28 #4, 263-65 D. Miller et al
- " 28 #7, 341-73 P. & G. Thurling 1.17 A.



Y
T
N
U
C
O
L
L
B
U
M
T
R
U
S
H
I
P

SCALE 1 in = 10 CH.

JAN. 1, 1959

9 S.E.

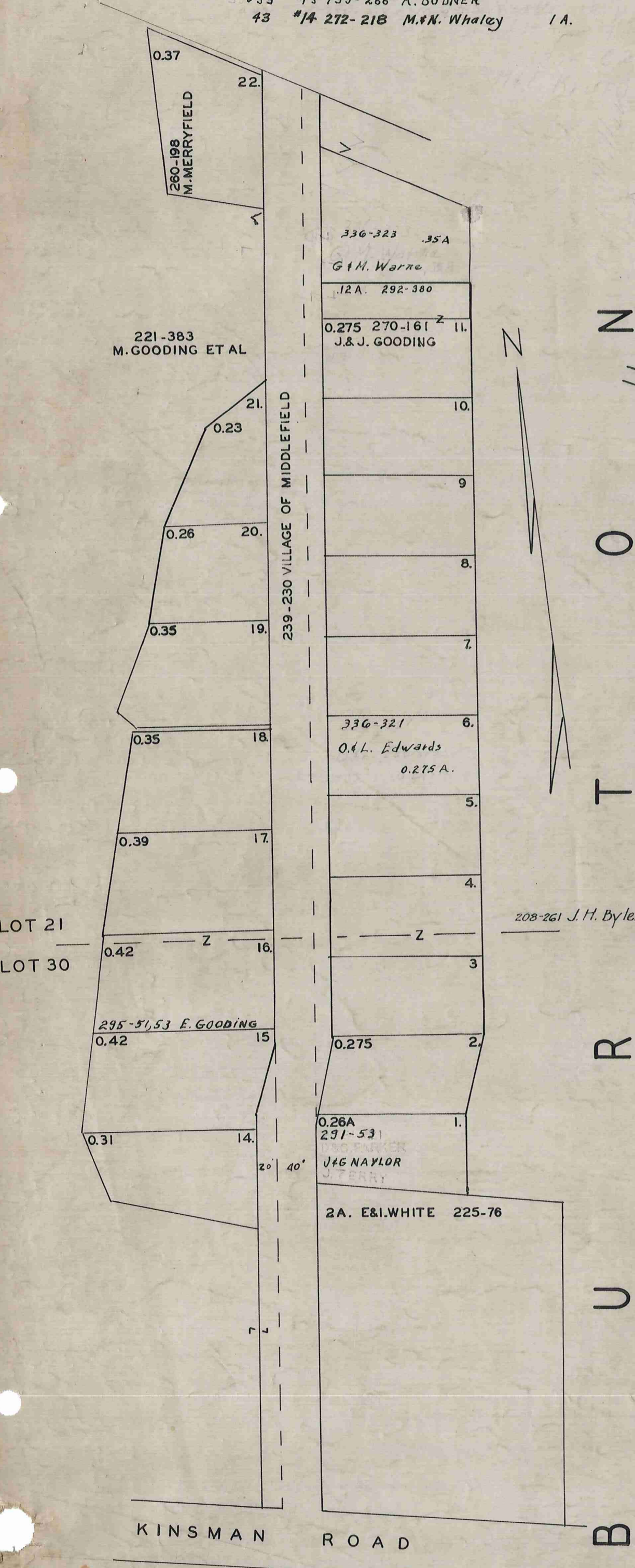
MIDDLEFIELD T.P.

SOUTH-WEST QUARTER

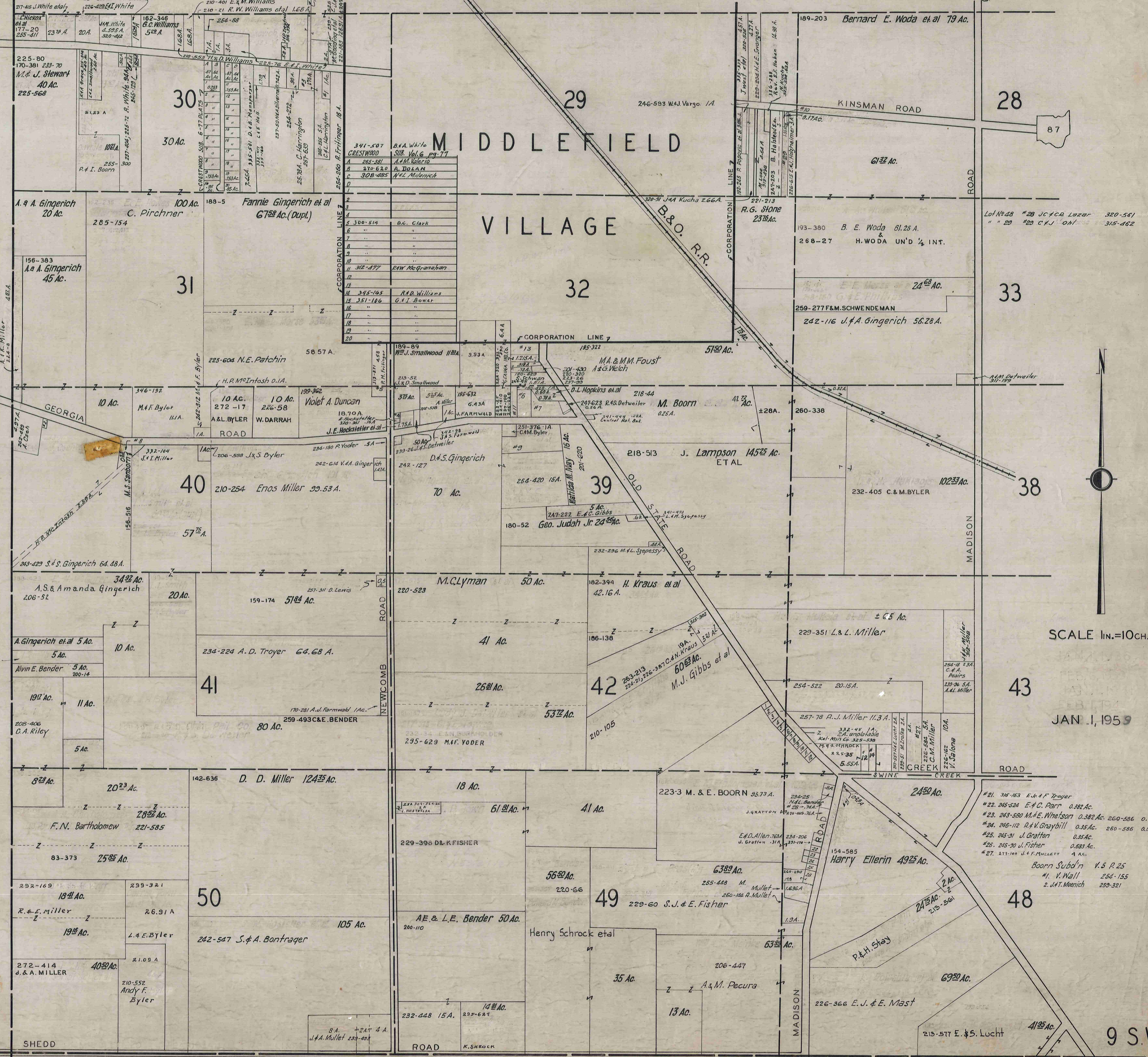
SOUTH-WEST QUARTER

528

- Lot 30 #1. 245-254 D. Barrios
- " 40 #2. 245-198 I. Whetstone 0.21 A.
- " 30 #3. 246-481 C.L. Harrington 1.75 A.
- " 39 #4. 266-534 T.V. Maddocks 0.25 A.
- " 40 #5. 251-131 R.L. Duncan 0.75 A.
- " 39 #6. 254-468 H.V. Ishee 2.56 A.
- " 39 #7. 232-310 E.H. Burkholder 3.44 A.
- " 40 #8. 254-536 J.A. Gingerich .75 A.
- " 39 #9. 205-526 L.H.S. Yoder ± 6.55 A.
- " 29 #10. 304-620 M.F. Krupar 0.17 A.
- " 39 #11. 260-40 D.F.E. Farmwald 0.76 A.
- " 43 #12. 285-282 R.B. Spencer 1 A.
- " 39 #13. 195-266 R. Bodner
- " 43 #14. 272-218 M.N. Whaley 1 A.



GOODING SUBDIVISION
 PLAT BOOK 6 PAGE 71
 SCALE 1" = 100'



SCALE 1in.=10Ch.

JAN. 1, 1959

9 S.W.